

**Blood pressure, cholesterol and
55,000 vascular deaths
among one million adults**

Sarah Lewington & Richard Peto
CTSU, University of Oxford, UK

for the PSC
(Prospective Studies Collaboration)

Lancet 2002; 360: 1903 & 2007; 370: 182 9

Collaborators and investigators

Atherosclerosis Risk in Communities (ARIC): L Chambless; *Belgian Inter-university Research on Nutrition and Health (BIRNH)*: G De Backer, D De Bacquer, M Kornitzer; *British Regional Heart Study (BRHS)*: P Whincup, SG Wannamethee, R Morris; *British United Provident Association (BUPA)*: N Wald, J Morris, M Law; *Busselton*: M Knuiman, H Bartholomew; *Caerphilly and Speedwell*: G Davey Smith, P Sweetnam, P Elwood, J Yarnell; *Cardiovascular Health Study (CHS)*: R Kronmal; *CB Project*: D Kromhout; *Charleston*: S Sutherland, J Keil; *Copenhagen City Heart Study*: G Jensen, P Schnohr; *Evans County*: C Hames (deceased), A Tyroler; *Finnish Mobile Clinic Survey (FMCS)*: A Aromaa, P Knekt, A Reunanen; *Finnrisk*: J Tuomilehto, P Jousilahti, E Vartiainen, P Puska; *Flemish Study on Environment, Genes and Health (FLEMENGHO)*: T Kuznetsova, T Richart, J Staessen, L Thijs; *Research Centre for Prevention and Health (Glostrup Population Studies)*: T Jorgensen, T Thomsen; *Honolulu Heart Program*: D Sharp, JD Curb; *Ikawa, Noichi and Kyowa*: H Iso, S Sato, A Kitamura, Y Naito; *Imperial College, London and Oxon Clinical Epidemiology Limited*: N Qizilbash; *Centre d'Investigations Preventives et Cliniques (IPC), Paris*: A Benetos, L Guize; *Israeli Ischaemic Heart Disease Study*: U Goldbourt; *Japan Railways*: M Tomita, Y Nishimoto, T Murayama; *Lipid Research Clinics Follow-up Study (LRC)*: M Criqui, C Davis; *Midspan Collaborative Study*: C Hart, G Davey-Smith, D Hole, C Gillis; *Minnesota Heart Health Project (MHHP) and Minnesota Heart Survey (MHS)*: D Jacobs, H Blackburn, R Luepker; *Multiple Risk Factor Intervention Trial (MRFIT)*: J Neaton, L Eberly; *First National Health and Nutrition Examination Survey Epidemiologic Follow-up Study (NHEFS)*: C Cox; *NHLBI Framingham Heart Study*: D Levy, R D'Agostino, H Silbershatz; *Norwegian Counties Study*: A Tverdal, R Selmer; *Northwick Park Heart Study (NPHS)*: T Meade, K Garrow, J Cooper; *Nurses' Health Study*: F Speizer, M Stampfer; *Occupational Groups (OG), Rome*: A Menotti, A Spagnolo; *Ohasama*: I Tsuji, Y Imai, T Ohkubo, S Hisamichi; *Oslo*: L Haheim, I Holme, I Hjermann, P Leren; *Paris Prospective Study*: P Ducimetiere, J Empana; *Perth*: K Jamrozik, R Broadhurst; *Prospective Cardiovascular Munster Study (PROCAM)*: G Assmann, H Schulte; *Prospective Study of Women in Gothenburg*: C Bengtsson, C Björkelund, L Lissner; *Puerto Rico Health Heart Program (PRHHP)*: P Sorlie, M Garcia-Palmieri; *Rancho Bernardo*: E Barrett-Connor, M Criqui, R Langer; *Renfrew and Paisley study*: C Hart, G Davey Smith, D Hole; *Saitama Cohort Study*: K Nakachi, K Imai; *Seven Cities China*: X Fang, S Li; *Seven Countries (SC) Croatia*: R Buzina; *SC Finland*: A Nissinen; *SC Greece (Greek Islands Study)*: C Aravanis, A Dontas, A Kafatos; *SC Italy*: A Menotti; *SC Japan*: H Adachi, H Toshima, T Imaizumi; *SC Netherlands*: D Kromhout; *SC Serbia*: S Nedeljkovic, M Ostojic; *Shanghai*: Z Chen; *Scottish Heart Health Study (SHHS)*: H Tunstall-Pedoe; *Shibata*: T Nakayama, N Yoshiike, T Yokoyama, C Date, H Tanaka; *Tecumseh*: J Keller; *Tromso*: K Bonna, E Arnesen; *United Kingdom Heart Disease Prevention Project (UKHDPP)*: H Tunstall-Pedoe; *US Health Professionals Follow-up Study*: E Rimm; *US Physicians' Health Study*: M Gaziano, JE Buring, C Hennekens; *Värmland*: S Törnberg, J Carstensen; *Whitehall*: M Shipley, D Leon, M Marmot; *Clinical Trial Service Unit (CTSU)*: J Armitage, C Baigent, Z Chen, R Clarke, R Collins, J Emberson, J Halsey, M Landray, S Lewington, A Palmer (deceased), S Parish, R Peto, P Sherliker, G Whitlock.

Steering Committee — S Lewington (coordinator and statistician), S MacMahon (chair), R Peto (statistician), A Aromaa, C Baigent, J Carstensen, Z Chen, R Clarke, R Collins, S Duffy, D Kromhout, J Neaton, N Qizilbash, A Rodgers, S Tominaga, S Törnberg, H Tunstall-Pedoe, G Whitlock.

<http://www.ctsu.ox.ac.uk/projects/psc/>

Prospective Studies Collaboration

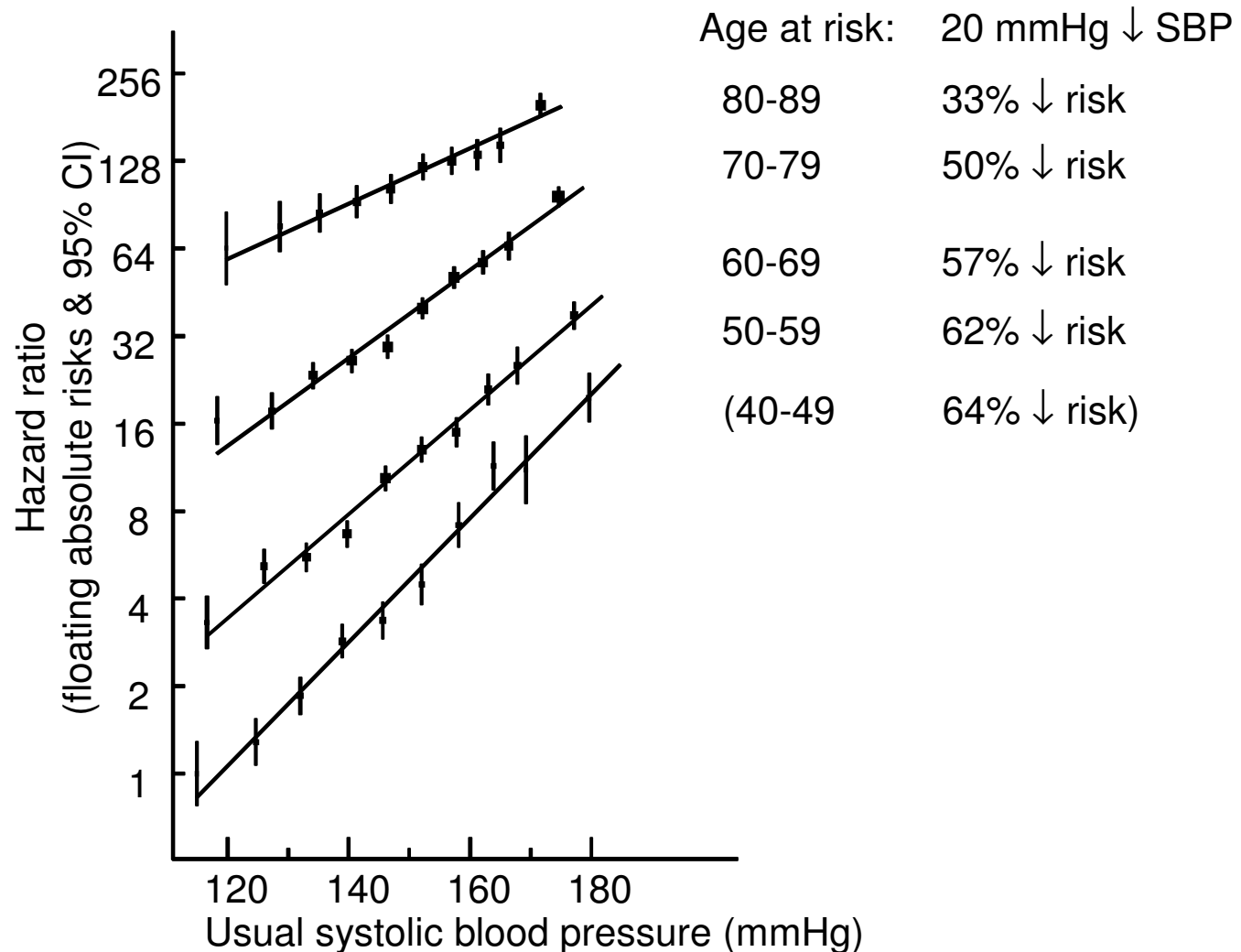
Established chiefly to investigate associations of blood pressure and blood cholesterol with cause-specific mortality

Individual data on 1 M participants without any previous history of vascular disease from 61 prospective cohort studies

120 000 deaths (55 000 vascular, 26 000 cancers), half during and half after first decade of follow-up

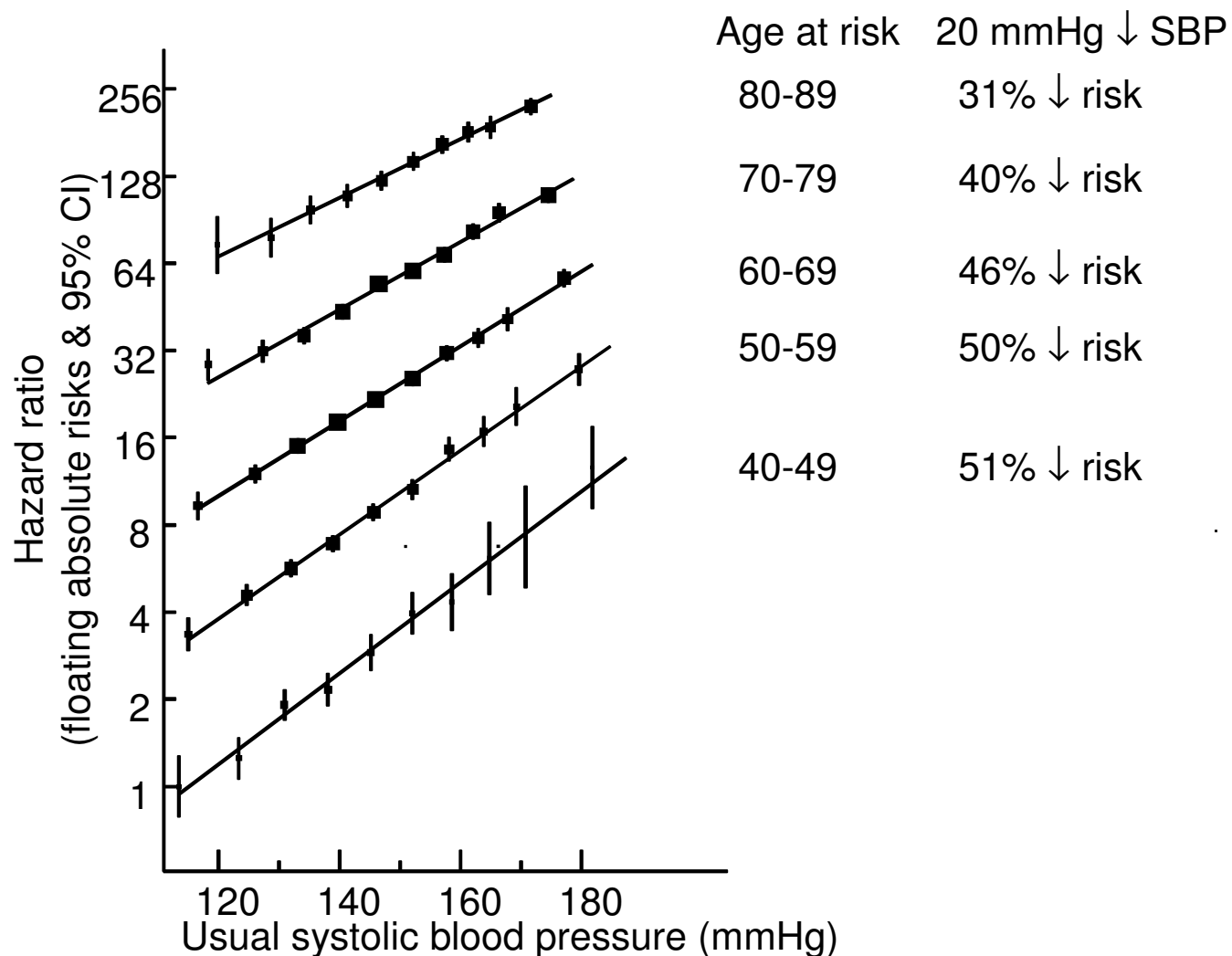
Stroke mortality in each decade of age versus usual SBP at the start of that decade

11 274 deaths at ages 50 - 89



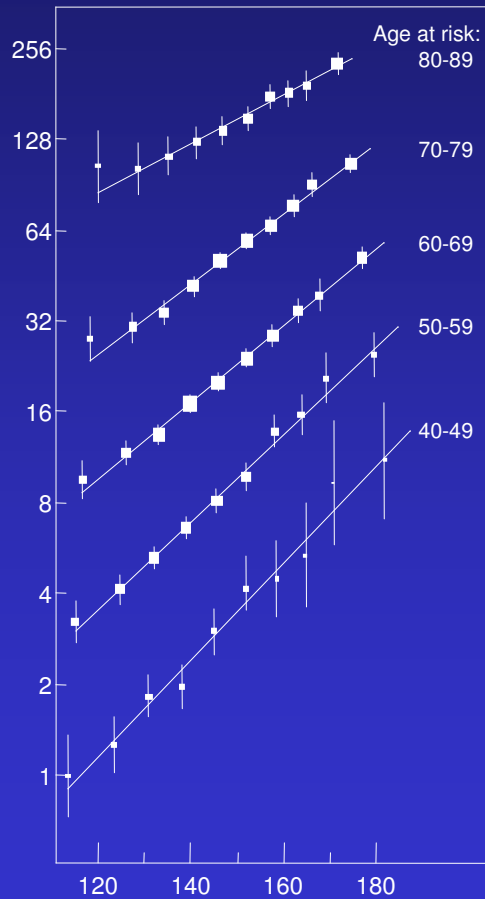
CHD mortality in each decade of age versus usual SBP at the start of that decade

33 867 deaths at ages 40 - 89



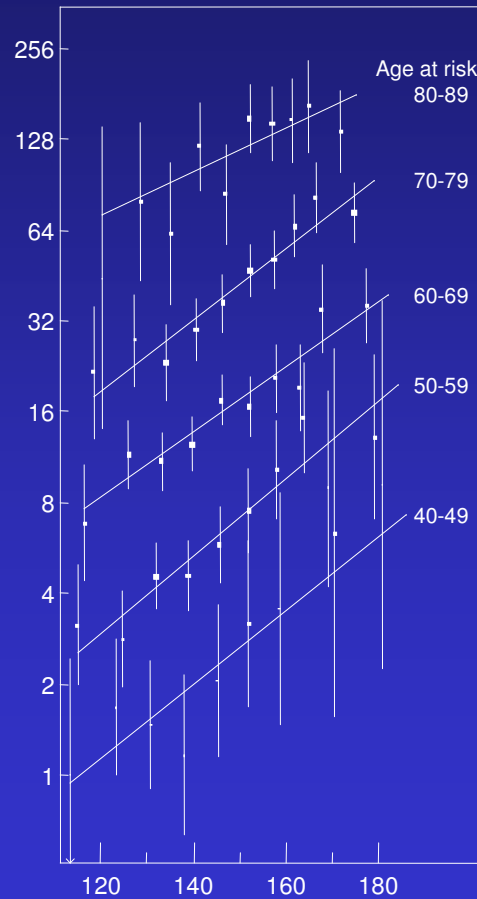
Sample size matters: CHD vs SBP by age in random samples of 0.5M, 50K, or 5K people from PSC data

500,000 people



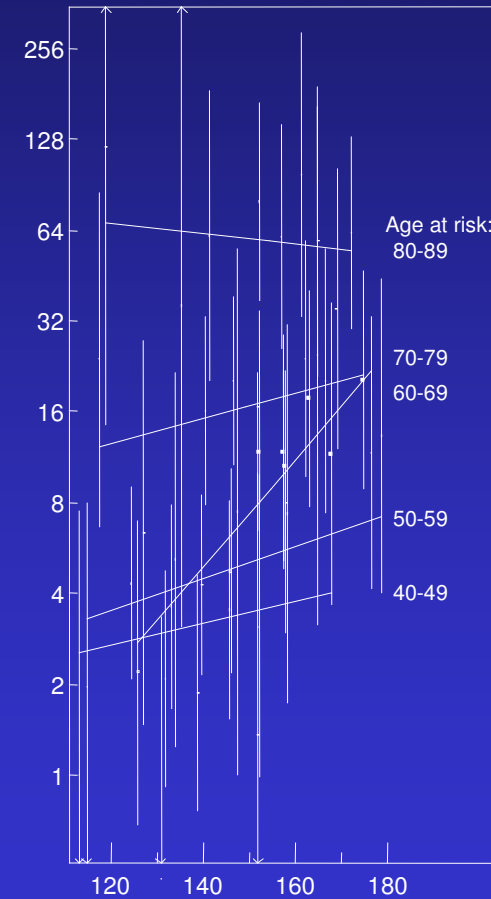
Usual SBP

50,000 people



Usual SBP

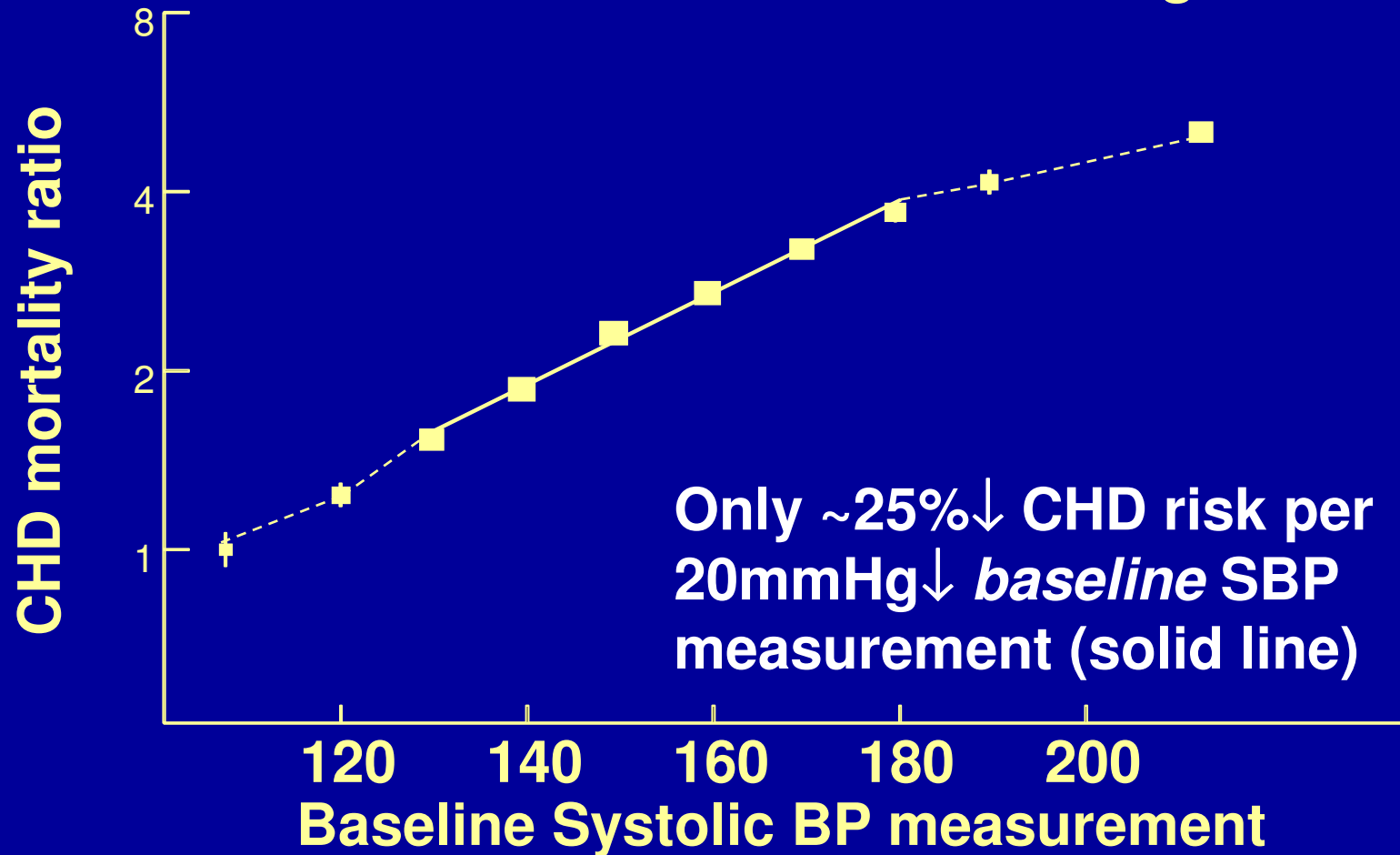
5000 people



Usual SBP

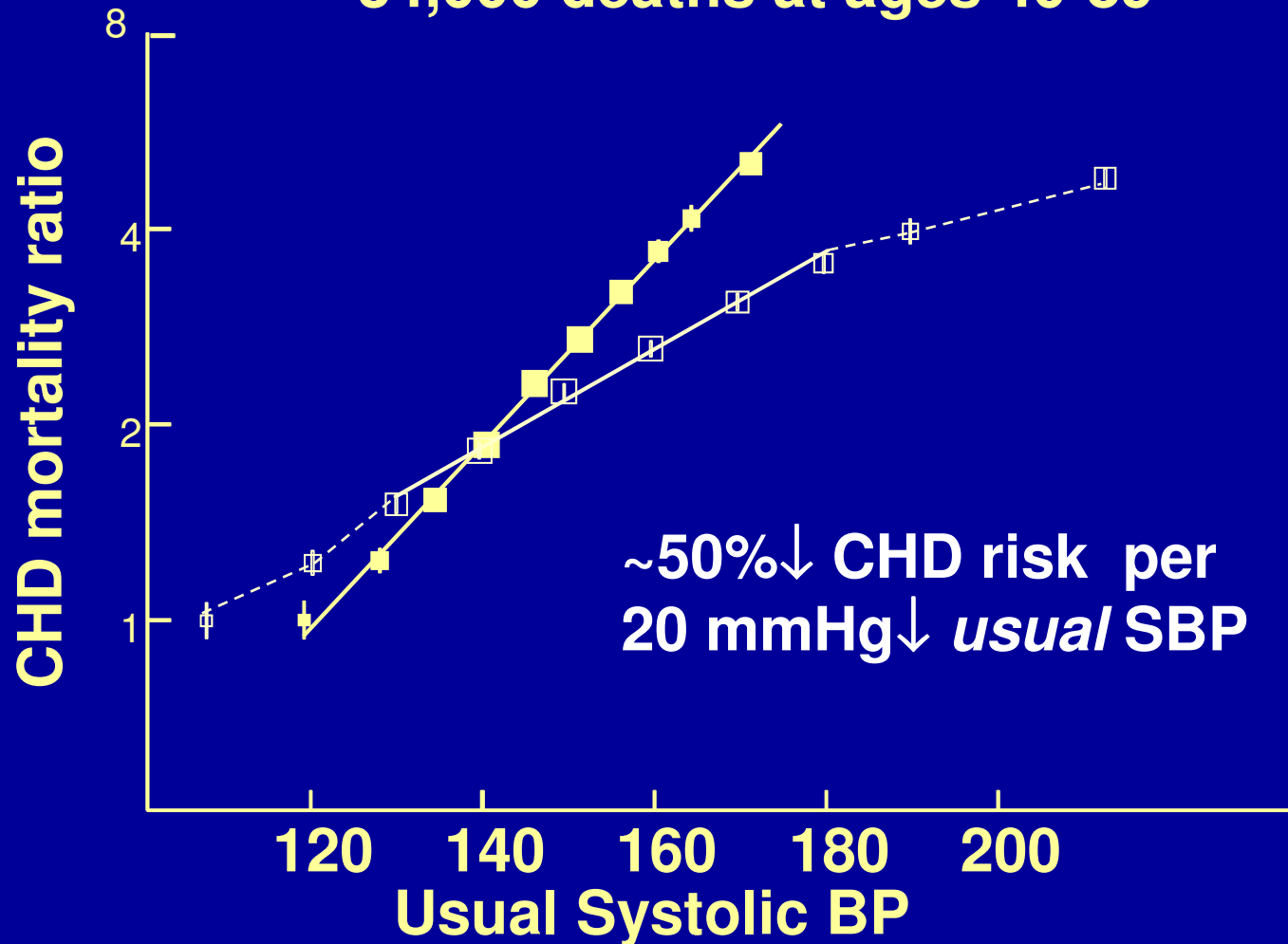
Prospective Studies Collaboration, uncorrected: CHD mortality vs baseline systolic BP measurement

PSC: 34 000 CHD deaths at ages 40-89



PSC, corrected for regression dilution: CHD mortality versus usual SBP

34,000 deaths at ages 40-89



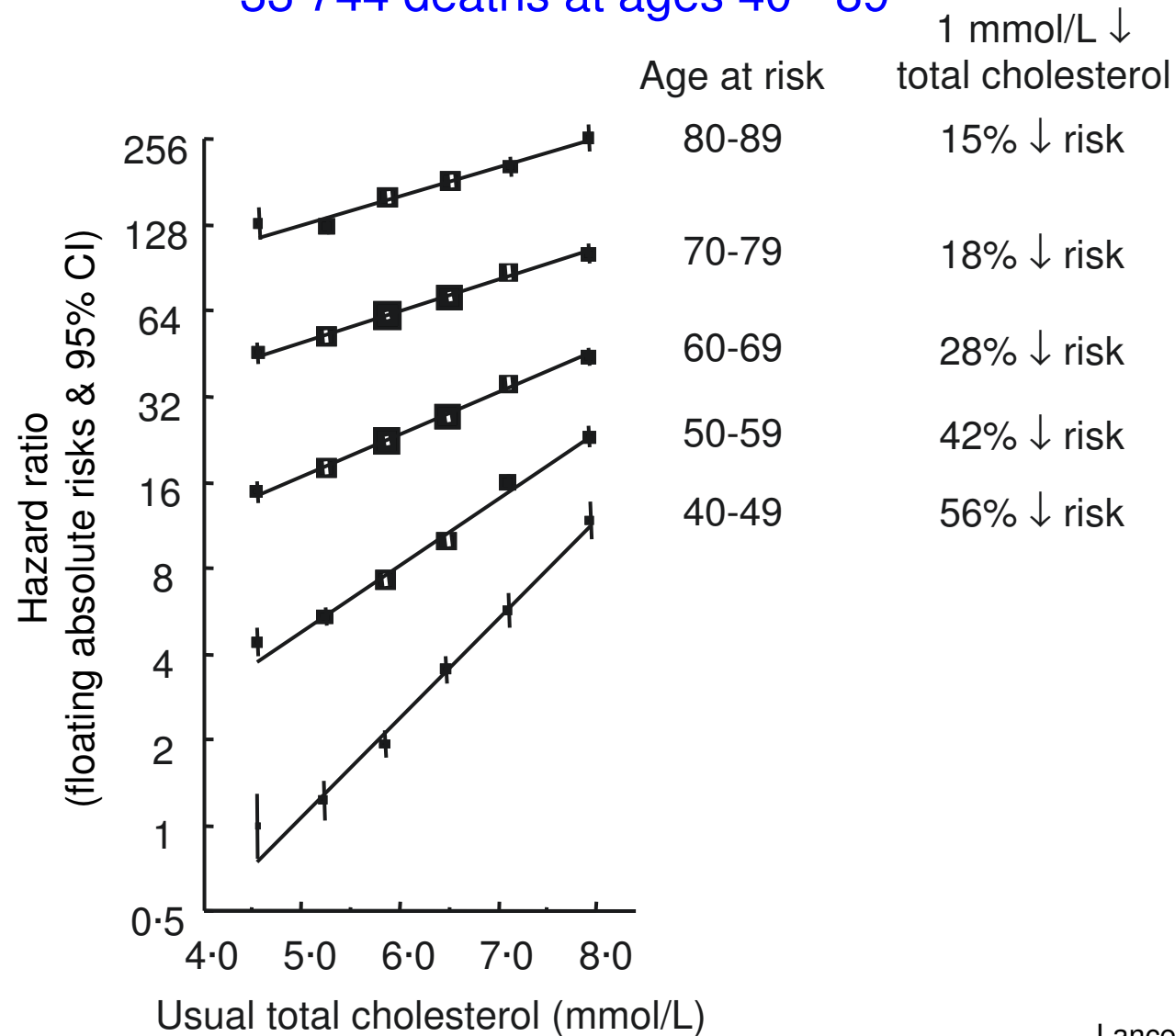
Comparison of different BP indices

If just one single measurement of BP is used to predict risk then:

- the measured **systolic** BP is slightly more informative than the measured **diastolic** BP
- their **average** is slightly more informative than either alone
- their **difference** (i.e. pulse pressure) is much less informative

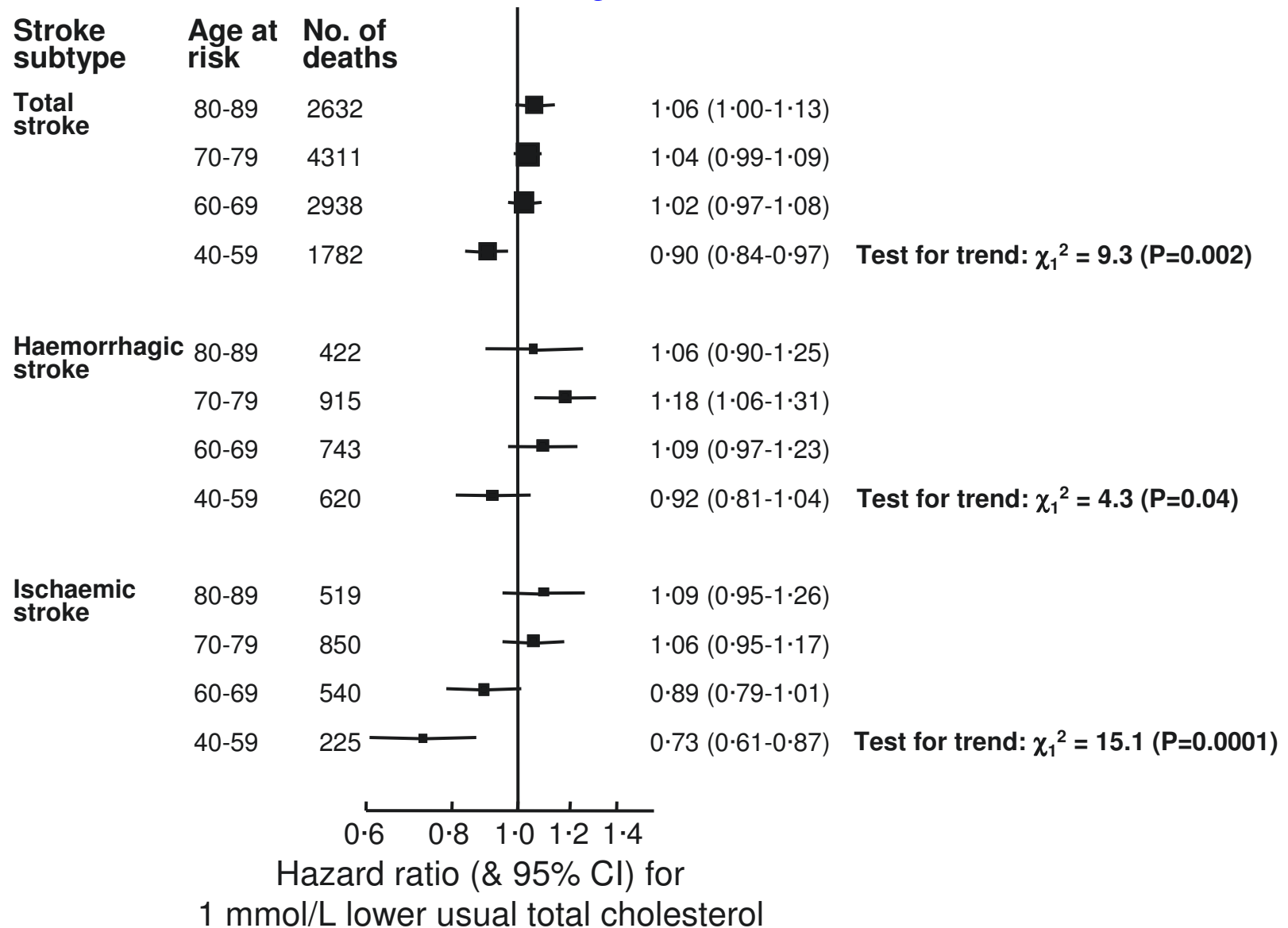
CHD mortality in each decade of age versus usual total cholesterol at the start of that decade

33 744 deaths at ages 40 - 89

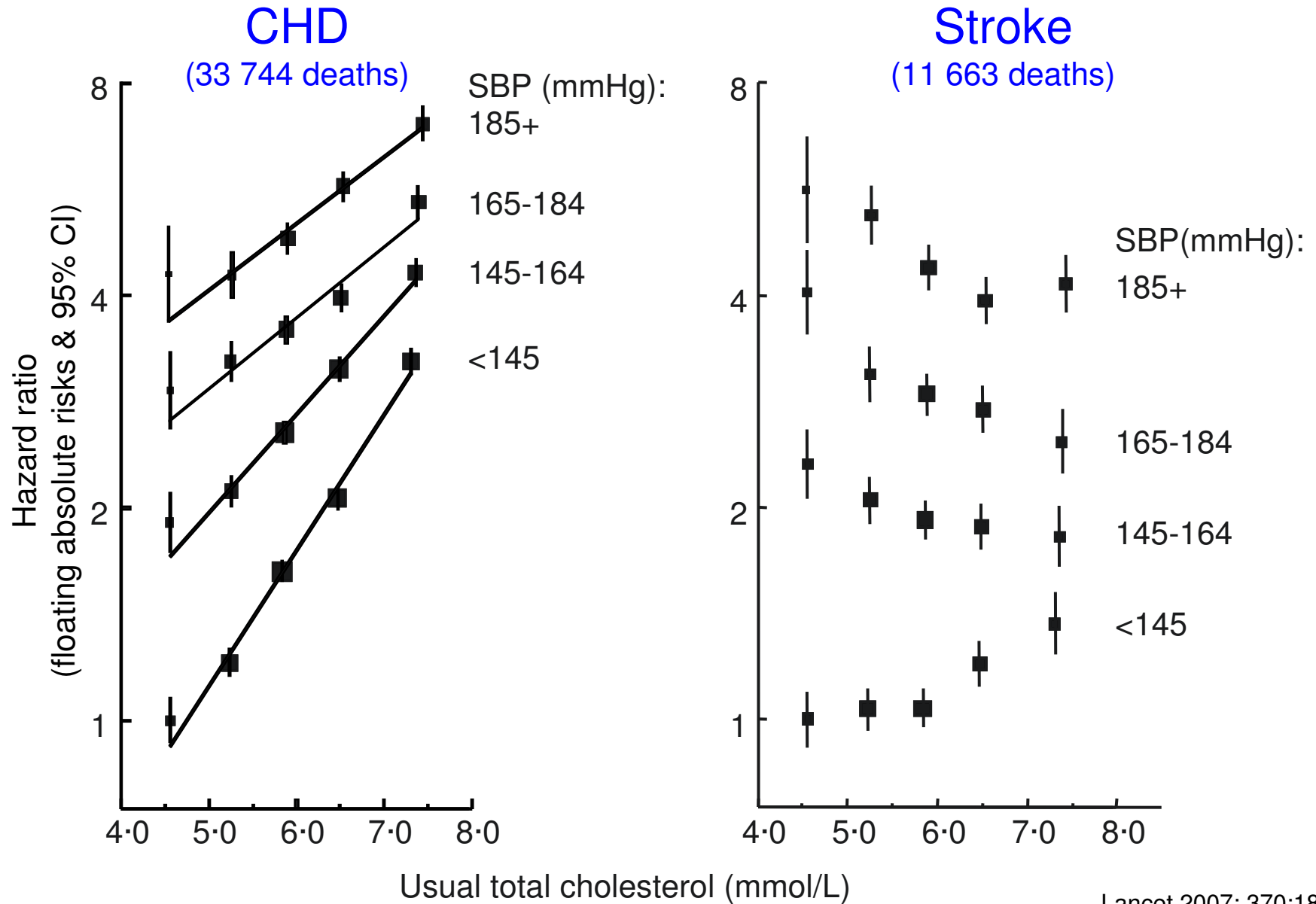


Stroke mortality versus usual total cholesterol by type and age

11 663 deaths at ages 40 - 89

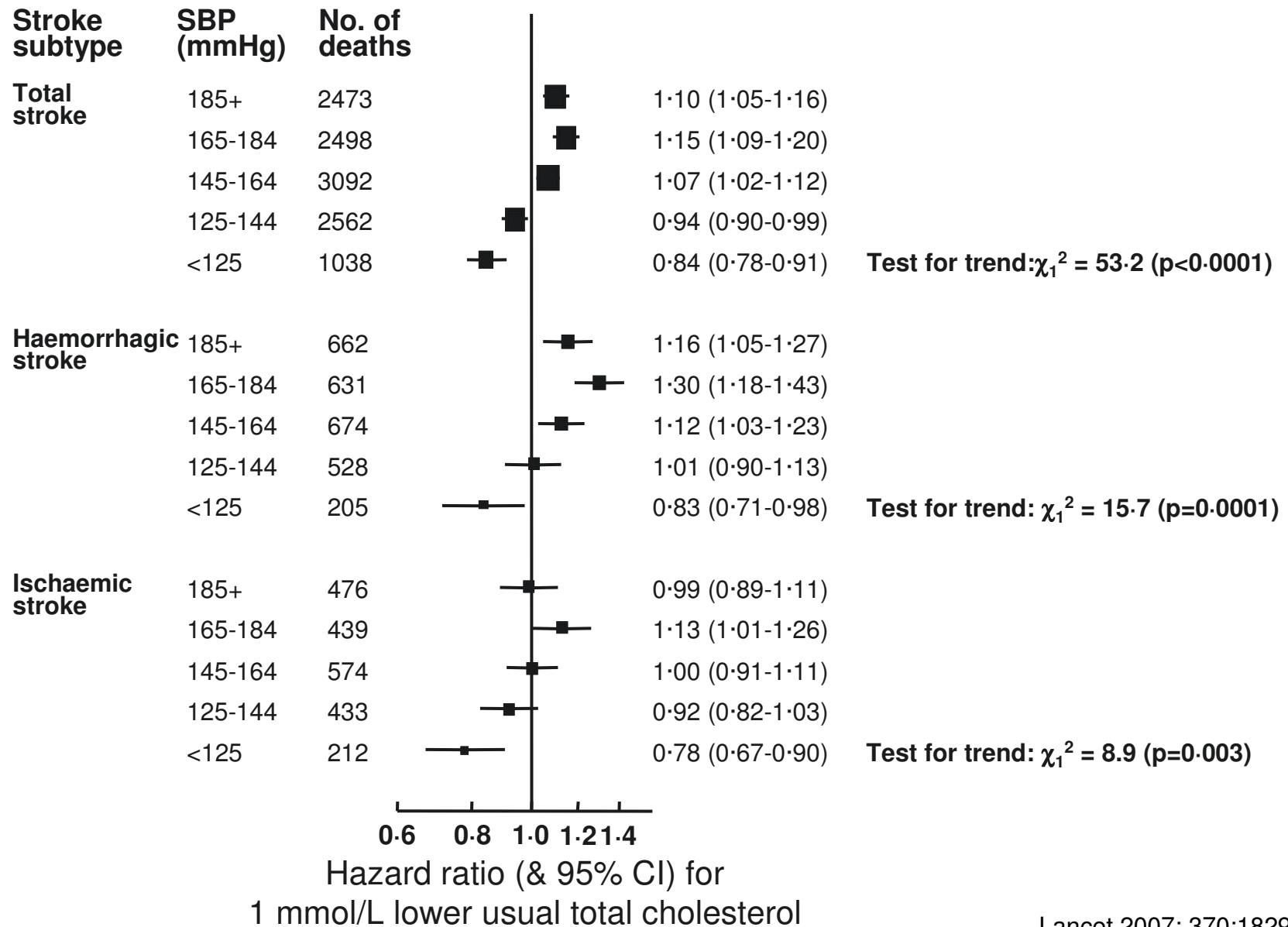


PSC: CHD and stroke mortality versus usual total cholesterol by baseline blood pressure

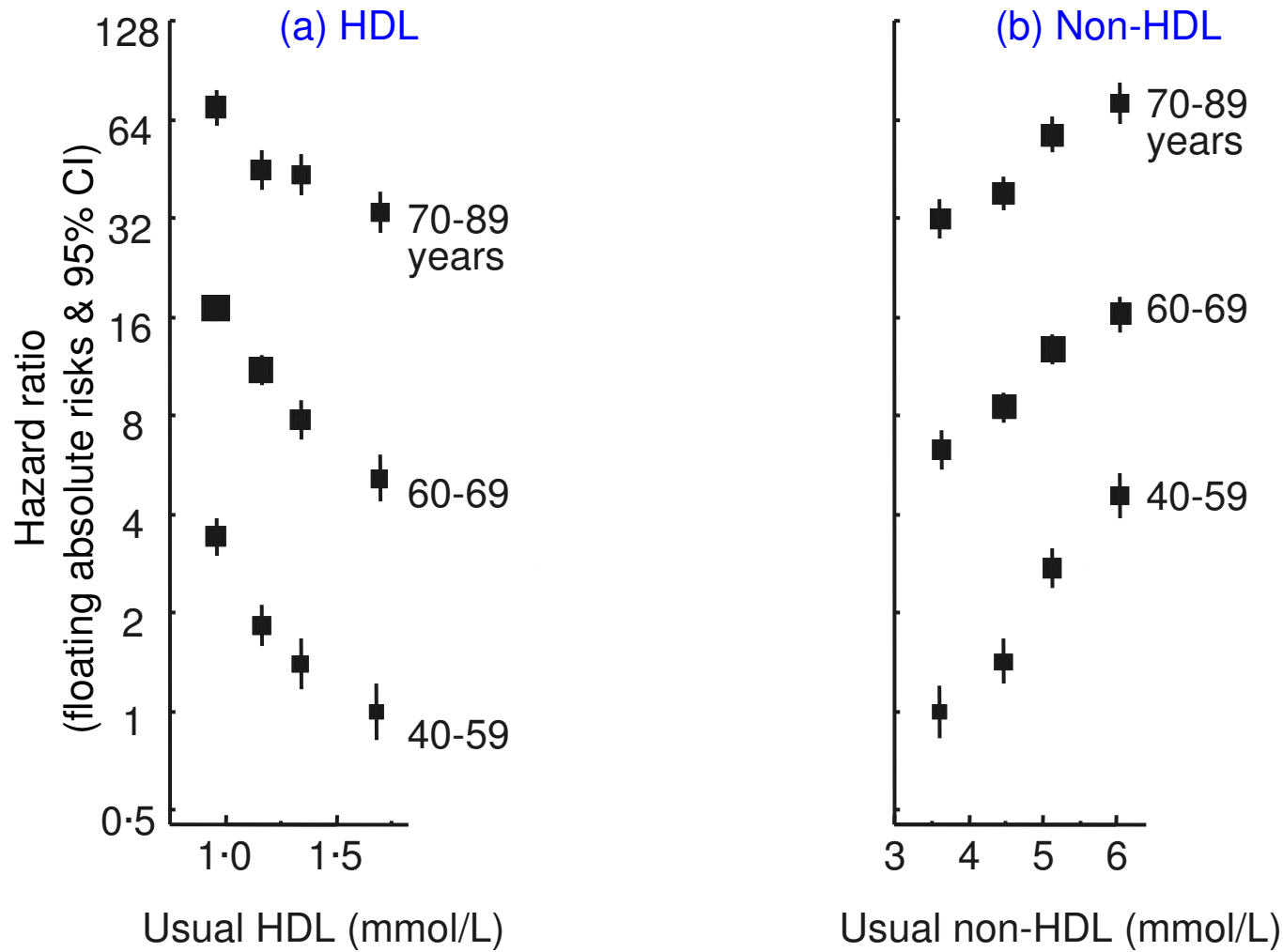


Stroke mortality versus usual total cholesterol by baseline SBP

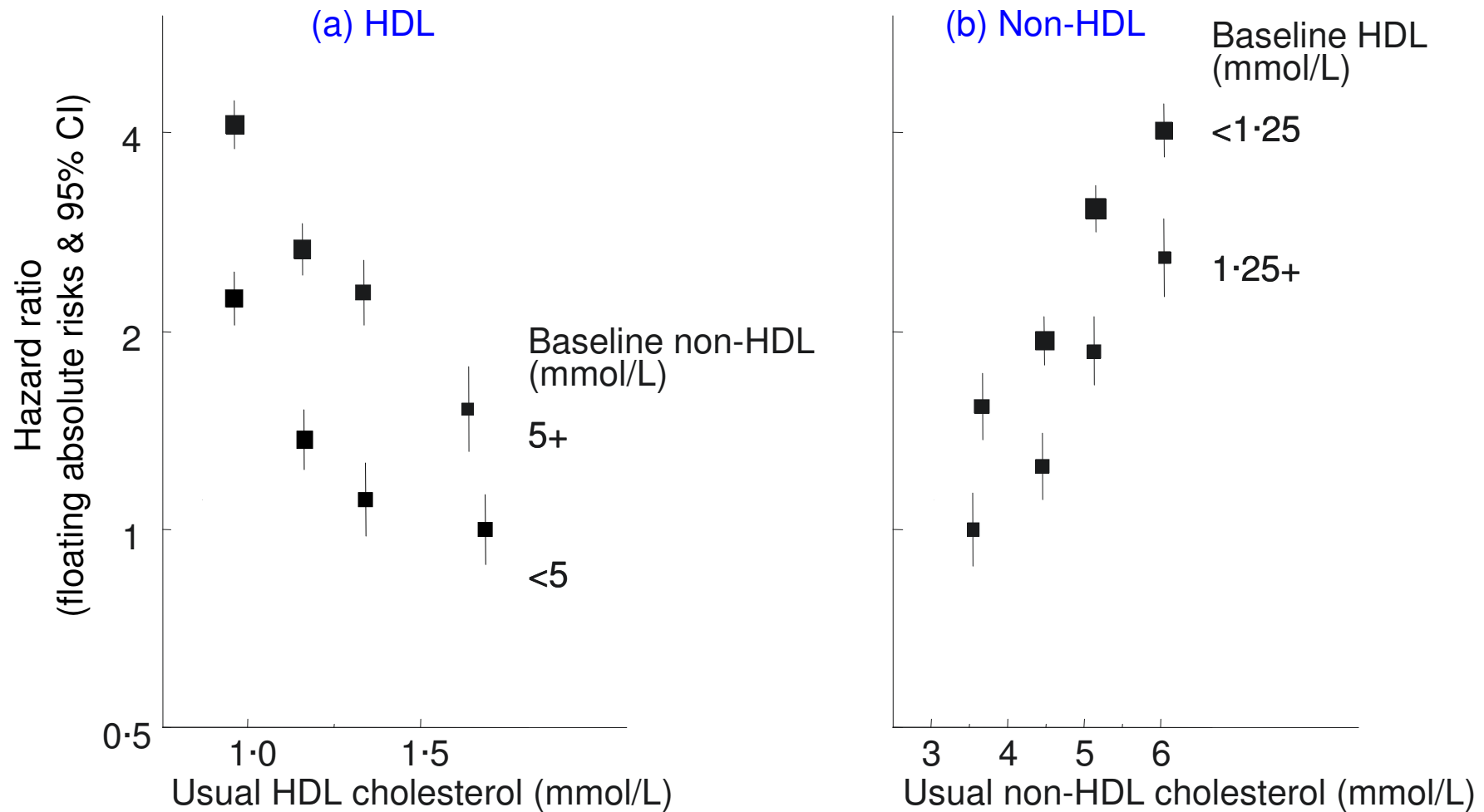
11 663 deaths at ages 40 - 89



CHD mortality (3020 deaths at ages 40-89) versus usual (a) HDL cholesterol; (b) non-HDL cholesterol by age at risk



CHD mortality (3020 deaths at ages 40-89) versus:
(a) usual HDL cholesterol by baseline non-HDL cholesterol
(b) usual non-HDL cholesterol by baseline HDL cholesterol



Conclusions:

Blood pressure, cholesterol & vascular mortality

- 20 mmHg SBP (10 mmHg DBP) was associated with ~2-fold difference in vascular mortality risk (slightly less in old age & stronger for stroke)
- Total cholesterol is a major risk factor for CHD mortality both in middle and in old age. The joint relative effects of total cholesterol and blood pressure are approximately additive (rather than multiplicative)
- The joint relative effects of HDL and non-HDL cholesterol are approximately independent and additive, and the ratio total/HDL is statistically twice as informative as total cholesterol alone
- A positive relationship with ischaemic and total stroke mortality was seen only in middle age and only in those with below-average blood pressure. The contrast between these statistically reliable observational epidemiological results and the statistically reliable randomised trial results is substantial and invites further research