

**National School of Public Health  
Oswaldo Cruz Foundation, Ministry of Health,  
Rio de Janeiro, Brazil**



# **Latin American Cancer Survival Study (LATINCARE Project): Cervix Cancer**

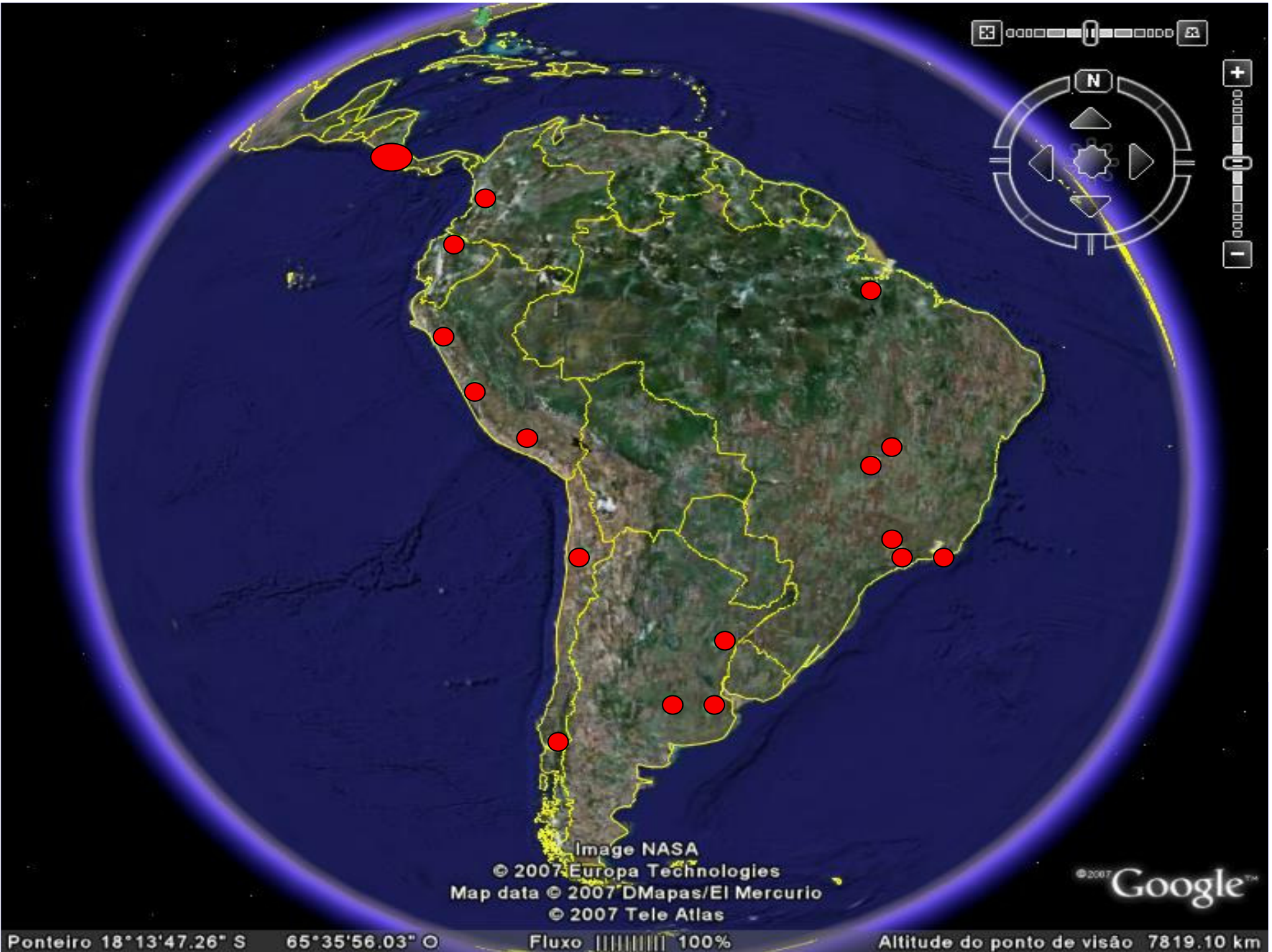
**Sergio Koifman**

# Contents

- Antecedents
- LATINCARE: methods and objectives
- Data collection and analysis
- Perspectives

# Objetivos

- Obter estimativas quantitativas e comparáveis da sobrevida de câncer na América Latina para o câncer de colo uterino a partir de dados individuais de Registros de Câncer de Base Populacional, fornecidos segundo padrões acordados e centralmente analisados.
- Comparar as estimativas obtidas de sobrevida para o câncer de colo uterino na América Latina.



# Data collection

- Incident cases diagnosed in selected years between 1995-2001
- Invasive cervical cancer
- 5-yrs follow-up (active search)
- Observed & relative survival ascertainment

# Data Analysis

- Central data analysis carried out at the National School of Public Health/Fiocruz, Ministry of Health, in Rio de Janeiro.

# Latincare

Cancer Registries

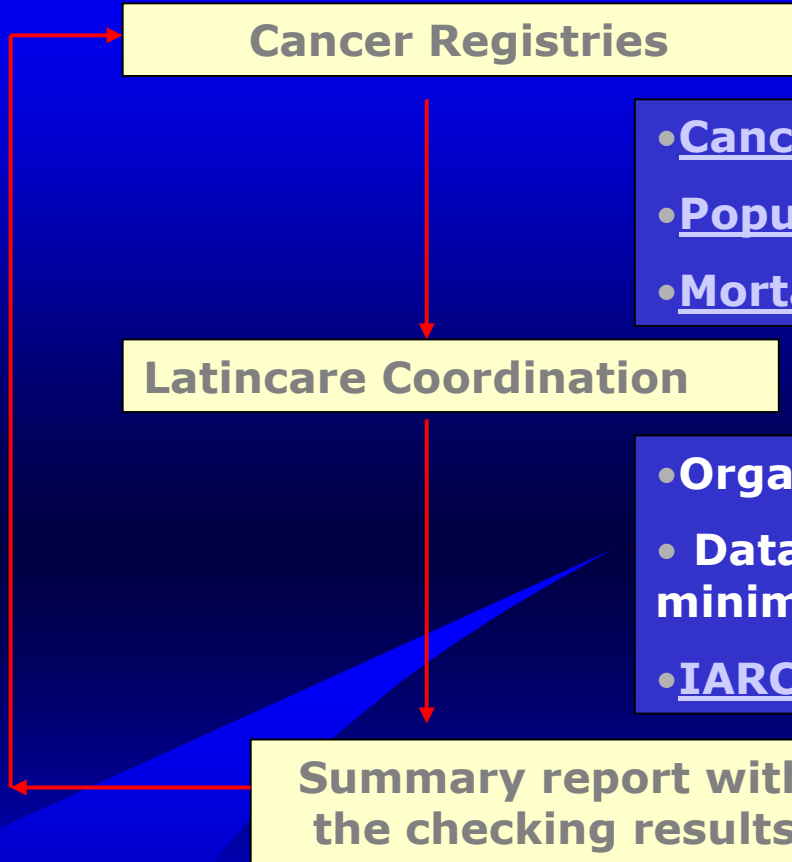
- Cancer database in a specific format
- Population database file
- Mortality database file

Latincare Coordination

- Organize database
- Data inconsistencies, missing and minimum follow-up checking
- IARC Check

Summary report with the checking results

Survival analysis



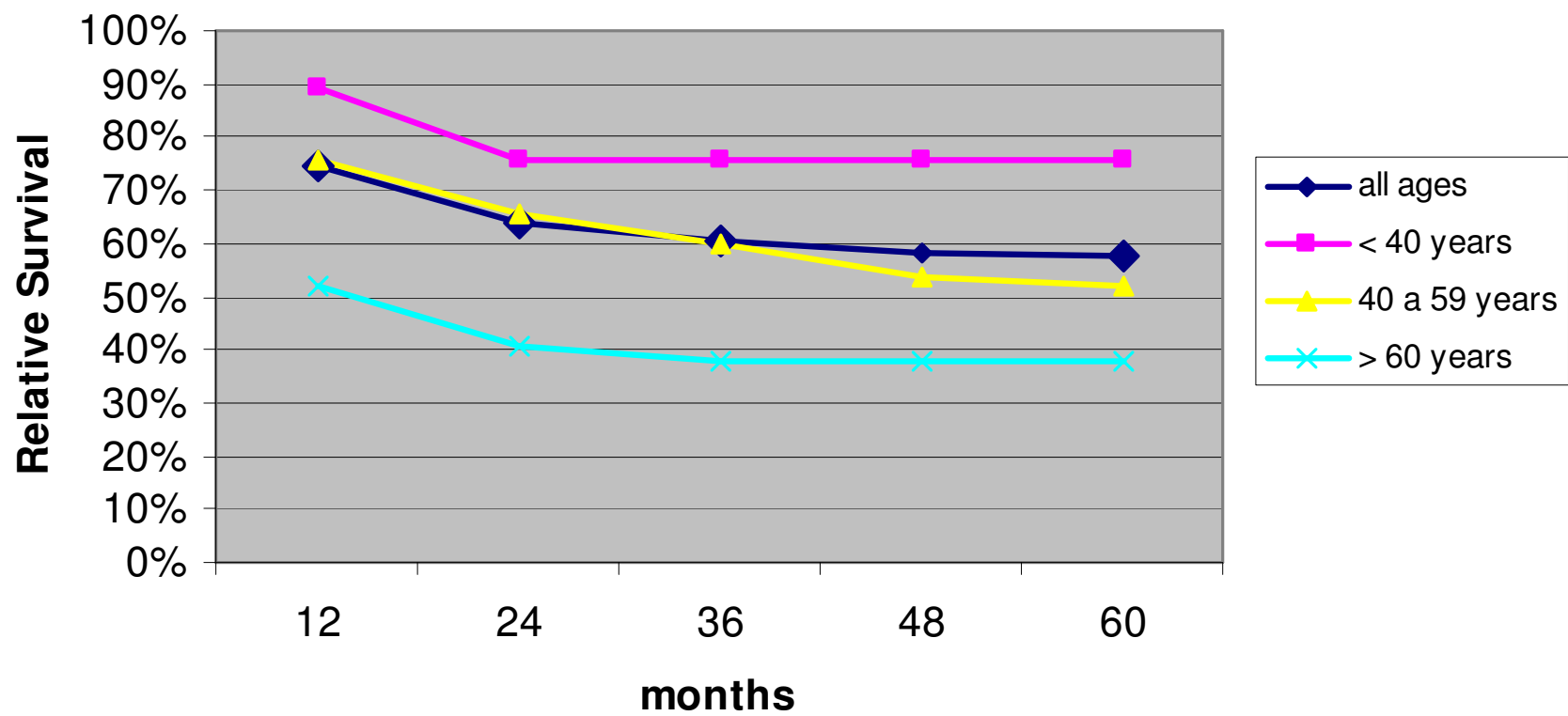
VARIAVEIS_LATINCARE	VARIAVEIS_SEER	LENGHT
REGISTRO	REGISTRY	2
IDENTIFICAÇÃO_PACIENTE	PATIENT_ID	8
TYPE_REPORT_SOURCE	TYPE OF REPORTING SOURCE	1
PAIS	COUNTRY	3
MÊS_NASC	MONTH_BIRTH	2
ANO_NASC	YEAR_BIRTH	4
IDAD_DIAG	AGE AT DIAGNOSIS	3
RAÇA	RACE	2
SEXO	SEX	1
EXTENSÃO DOENÇA	EXTENSÃO DA DOENÇA	1
mês_diagn	MONTH_DIAGNOSTIC	2
ANO_diagn	YEAR_DIAGNOSTIC	4
INDIC_TUMORES MULTIPLOS	INDIC_TUMORES MULTIPLOS	2
PRIMARY SITE	PRIMARY SITE	3
MORFOLOGIA	HISTOLOGY ICD0-3	4
Diag_confirmation	DIAG_CONFIRMATION	1
coding_Exte_disease	CODING_EXT_DISEASE	1
MÊS_STATUS VITAL	MONTH_LAST FOLLOWUP	2
ANO_STATUS VITAL	YEAR_LAST FOLLOWUP	4
follow-up status	FOLLOW-UP_STATUS	1
ICD_CODE	ICD CODE	1
CAUSE_DEATH (CID10)	CAUSE OF DEATH (ICD10)	4
Type Follow-up_expected	TYPE OF FOLLOW-UP EXPECTED	1
Behaviour recode	BEHAVIOUR_RECODE	1

# LATINCARE I

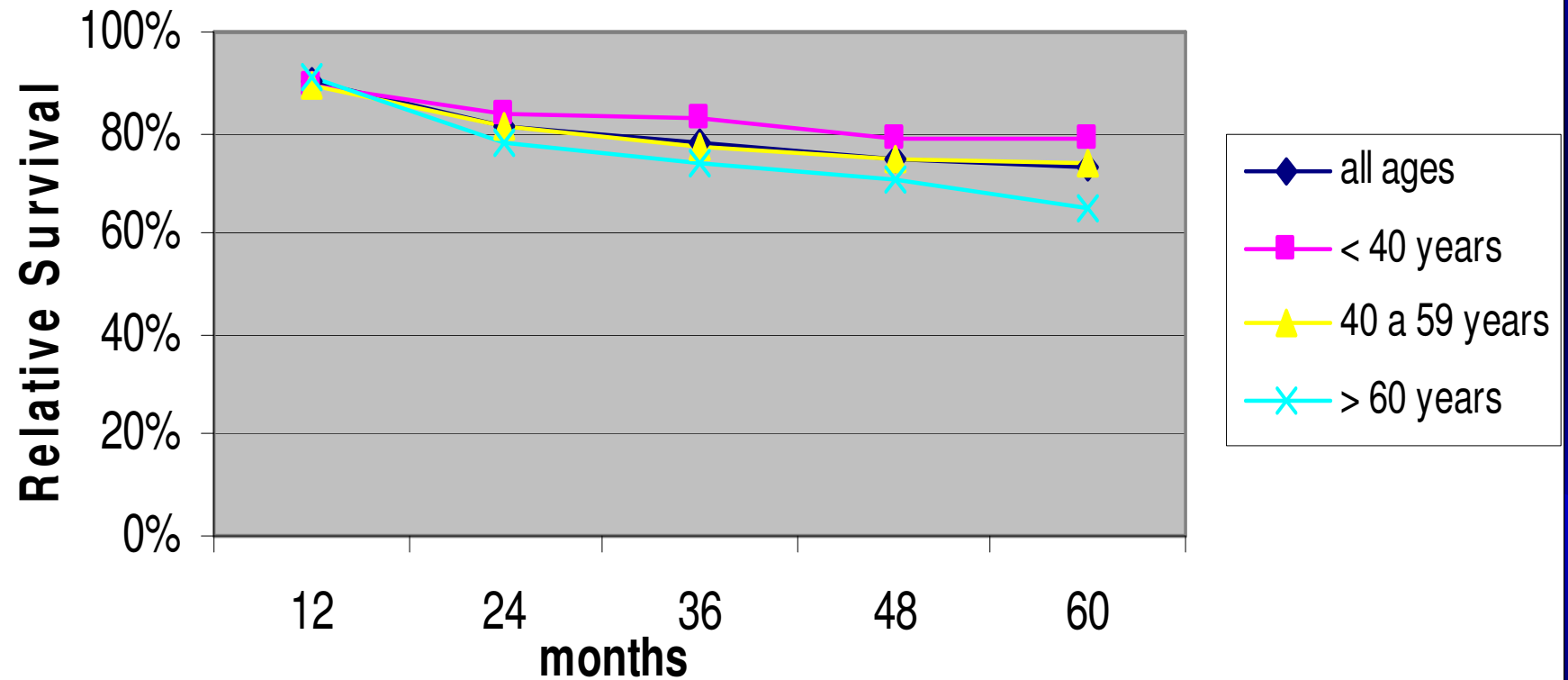
<b>Evaluation Parameters</b>	<b>Goiânia(1997-1999)</b> N = 437 (%)	<b>Lima (1997)</b> N = 724 (%)
<b>Unknown birthday and age</b>	<b>1,6</b>	<b>0,5</b>
<b>Unknown vital status</b>	<b>10,9</b>	<b>6,0</b>
<b>Multiple tumors</b>	<b>4,4</b>	<b>2,0</b>
<b>Reported date inconsistency</b>	<b>1,2</b>	<b>0,0</b>
<b>Histopathological confirmation</b>	<b>86,6</b>	<b>87,0</b>
<b>Losses before 4 yrs follow-up</b>	<b>18,3</b>	<b>26,4</b>
<b>DCO</b>	<b>1,6</b>	<b>8,3</b>
<b>Deaths 1 month of follow- up</b>	<b>0,5</b>	<b>1,0</b>

<b>Cancer Registries</b>	<b>Year of Diagnosis</b>	<b>Cervical cancer cases</b>
<b>Brazil</b>		
Goiânia	1997-1999	432
São Paulo	1997	1187
Belém-Ananindeua	1999	203
Rio de Janeiro	1997	460
Brasília	1998	306
Campinas	1994-1995	200
<b>Chile</b>		
Valdivia	1998-2000	115
<b>Argentina</b>		
Prov. Buenos Aires	1998	101
Prov. Rio Negro	2001	63
Prov. Entre Rios	2001	124
<b>Peru</b>		
Metropolitan Lima	1997	724
Arequipa	2000	119
Trujillo	1996-2001	409
<b>Costa Rica</b>		
	1995-2000	4943
<b>Ecuador</b>		
Quito	1995-1998	4362

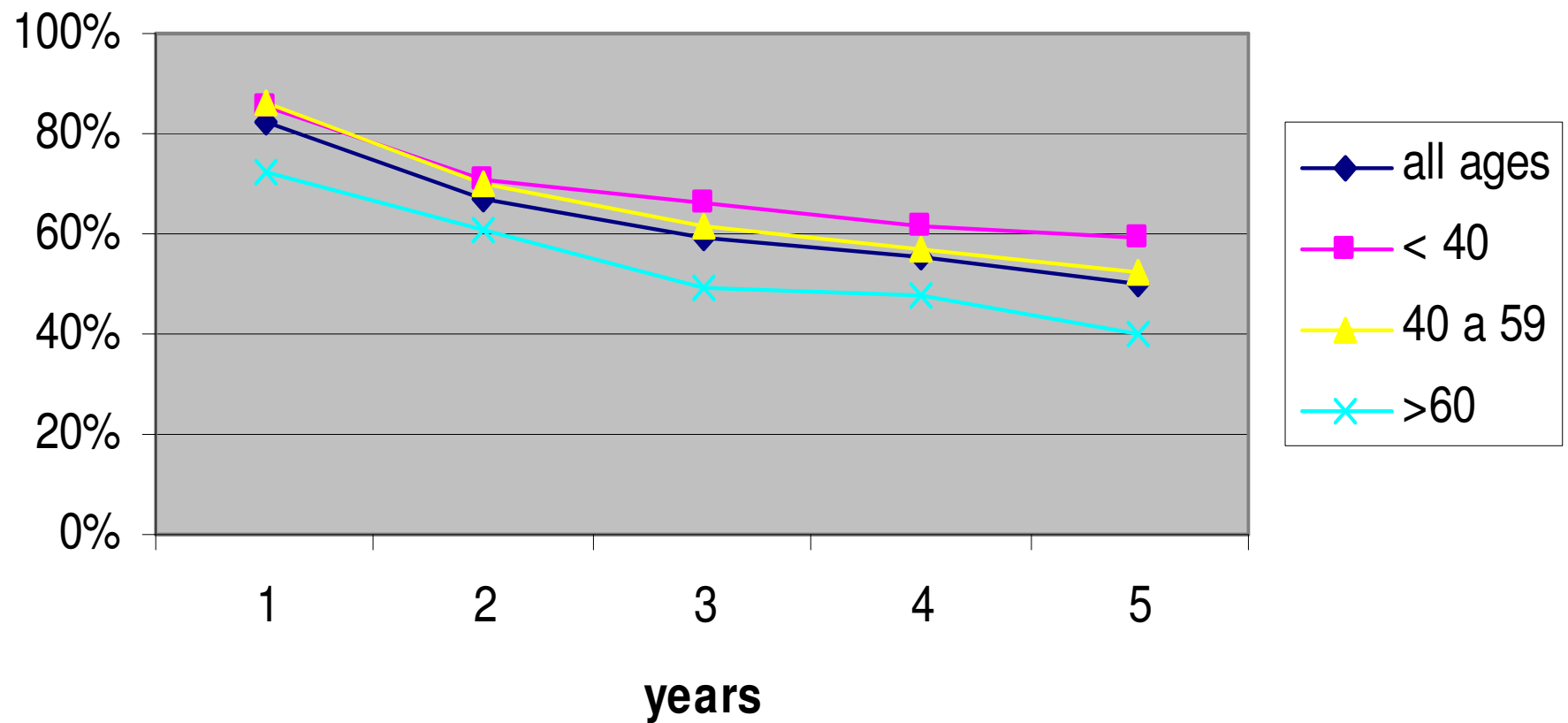
## Five Years Relative Survival of Cervix Cancer, Valdivia-Chile, 1998-2000



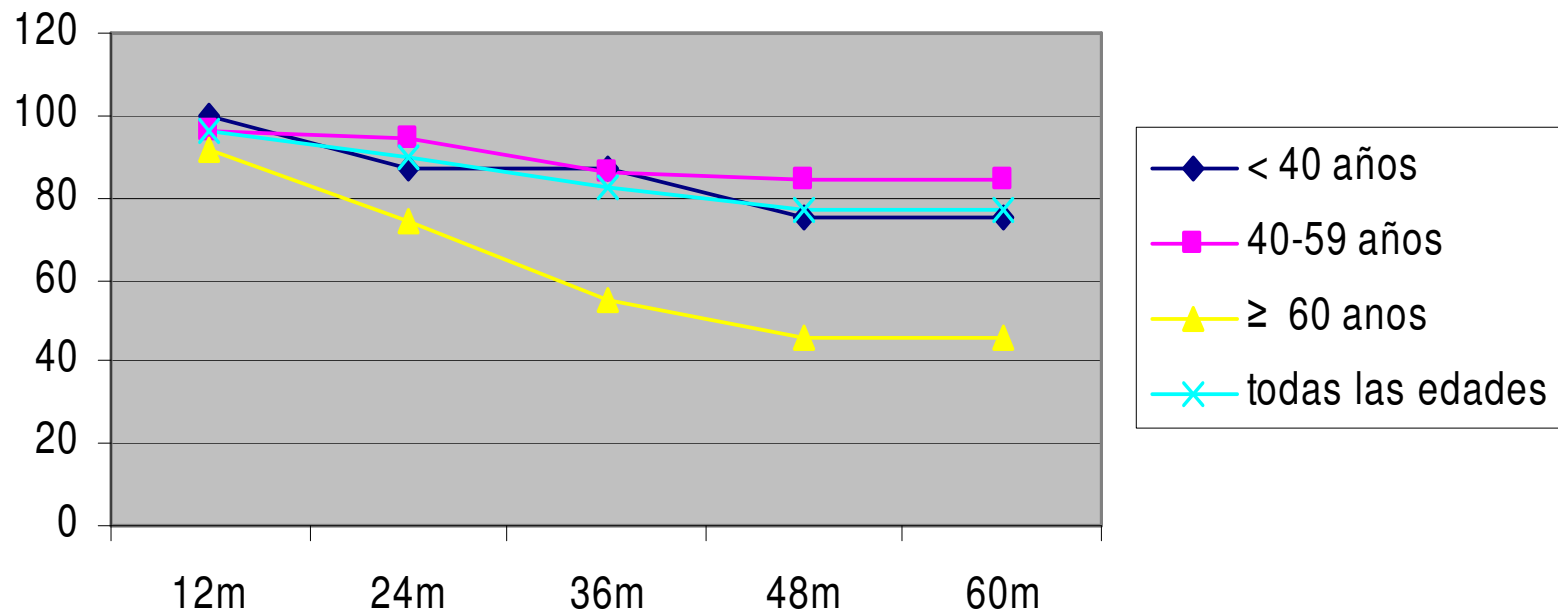
## Five Years Relative Survival of Cervix Cancer, Goiânia-Brazil,1997-1999



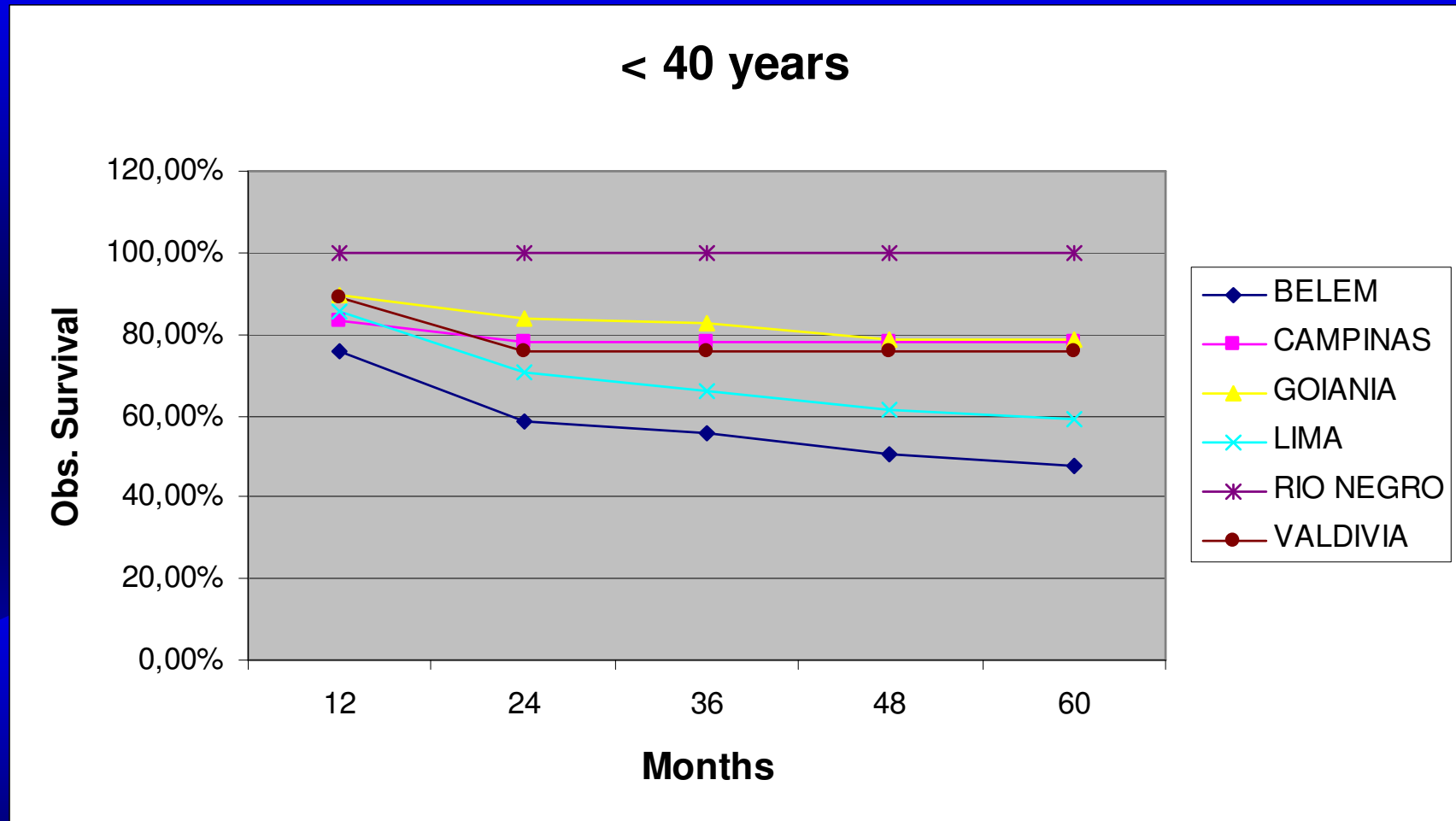
## Five years Observed Survival Curve Cervical Cancer, Lima, Peru - 1997



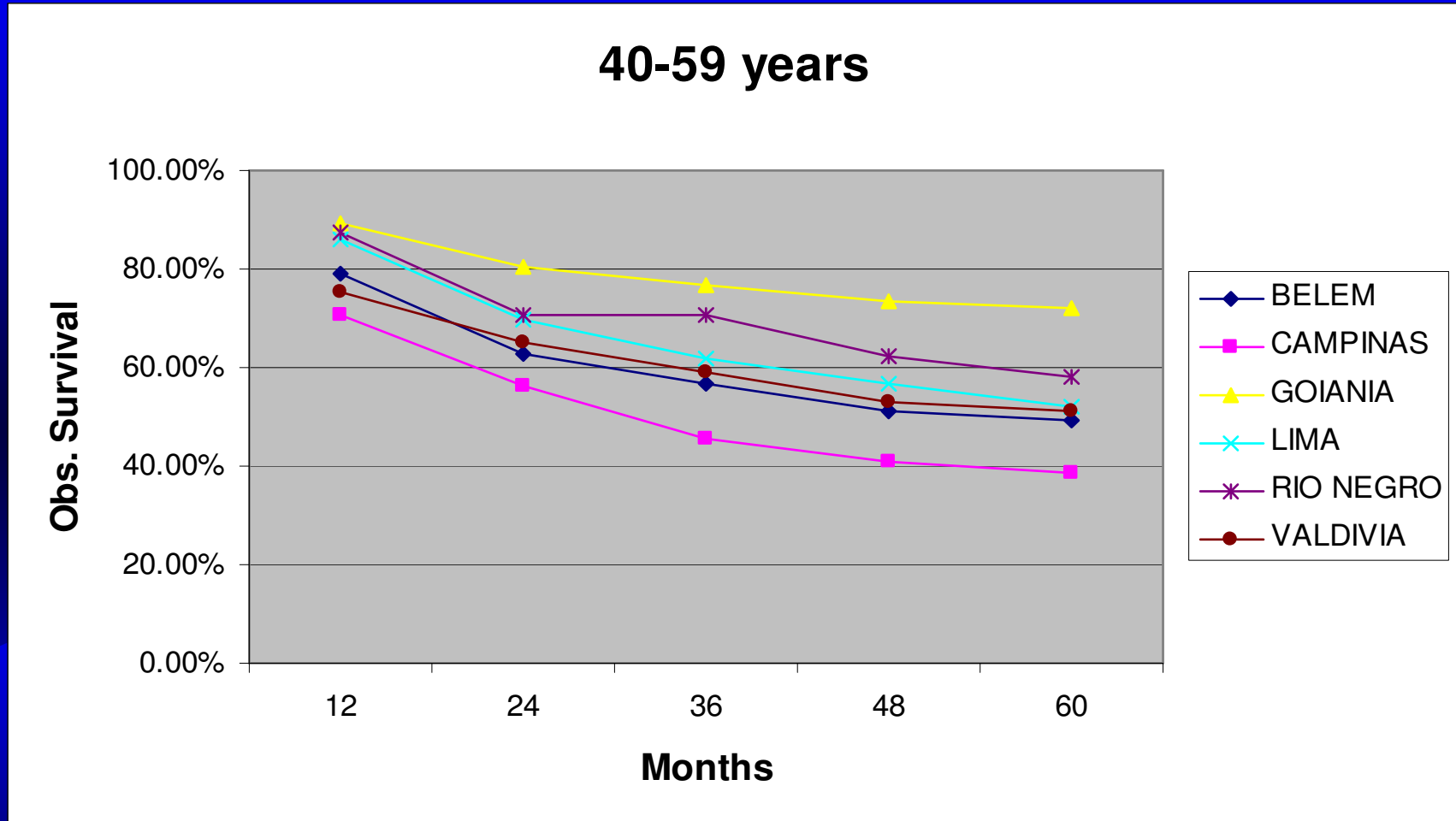
# 5-yrs relative survival of cervical cancer diagnosed in 1998, Buenos Aires Province, Argentina



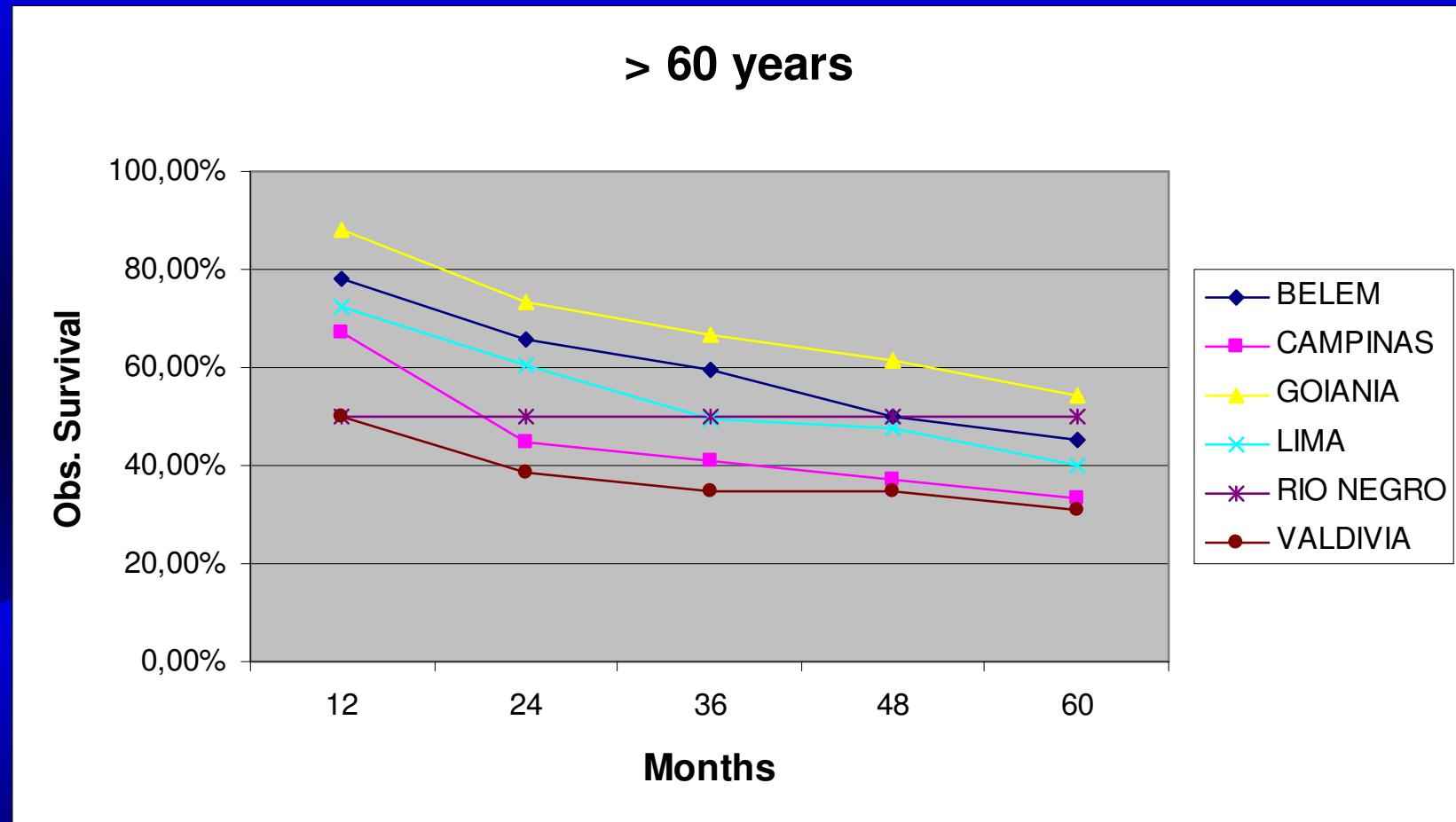
# Observed survival curve for < 40 years



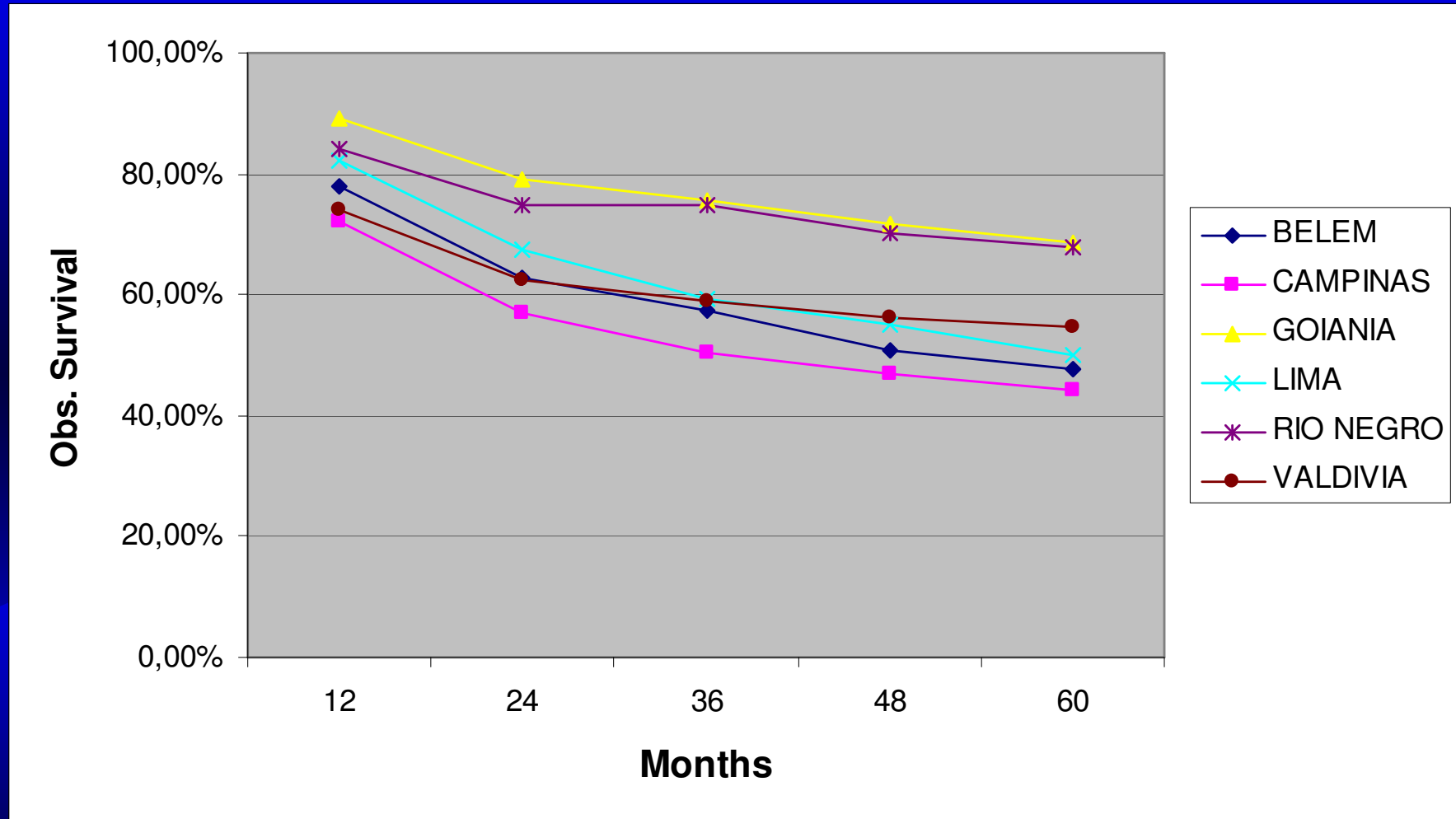
# Observed survival curve for 40 -59years

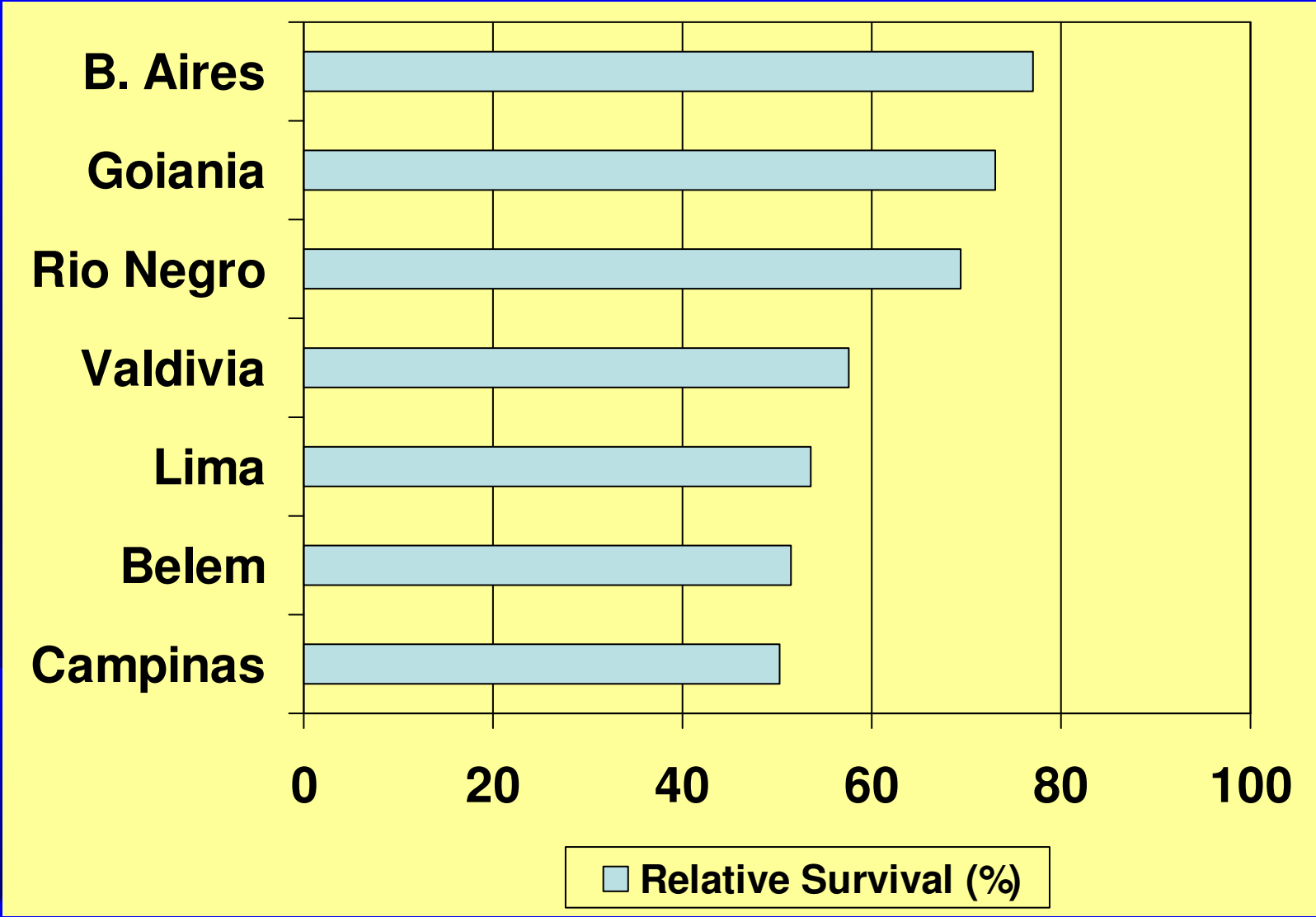


# Observed survival curve for > 60 years



# Observed survival, all ages





## 5-years Observed and Relative Survival, all ages (LATINCARE)

<b>Cancer Registry</b>	<b>Year of Enrollment</b>	<b>N</b>	<b>Obs Survival (%) (SE %)</b>	<b>Rel. Surviv. (%) (SE %)</b>
<b>Rio Negro</b>	<b>2001</b>	<b>44</b>	<b>67.8 (7.1)</b>	<b>69.5 (7.3)</b>
<b>Lima</b>	<b>1997</b>	<b>648</b>	<b>50.0 (2.6)</b>	<b>53.5 (2.2)</b>
<b>Valdivia</b>	<b>1998-2000</b>	<b>112</b>	<b>54.5 (4.7)</b>	<b>57.5 (5.0)</b>
<b>Goiania</b>	<b>1997-1999</b>	<b>369</b>	<b>68.7 (2.5)</b>	<b>73.1 (2.7)</b>
<b>Campinas</b>	<b>1994-1996</b>	<b>95</b>	<b>44.2 (5.2)</b>	<b>50.1 (5.5)</b>
<b>Belém</b>	<b>1999</b>	<b>206</b>	<b>47.5 (3.5)</b>	<b>51.4 (3.8)</b>

# Perspectives

- **Other cancer sites:**
  - **breast (in progress)**
  - **childhood cancer**
  - **stomach**
  - **colorectal**
  - **lung**

# **Coordinators, Participating Population-Based Cancer Registries**

- **Adolfo Ortiz, National Cancer Registry, Costa Rica**
- **Antonio Mirra & Maria Rosario Latorre, Sao Paulo, Brazil**
- **Elza Martinez, Brasilia, Brazil**
- **Fernand Bernard Corral, Quito, Ecuador**
- **Luis Eduardo Bravo, Cali, Colombia**
- **Luis Medina, Arequipa, Peru**
- **Jorge Caceres, Antofagasta, Chile**
- **Maria Enriqueta Bertran, Valdivia, Chile**
- **Maria Neves Mussio, Belem-Ananindeua, Brazil**
- **Maria Paula Curado & Jose Carlos de Oliveira, Goiania, Brazil**
- **Miguel Angel Prince, Entre Rios Province, Argentina**
- **Nazira Mahayri, Campinas, Brazil**
- **Paul Pilco & Patricia Perez, Lima, Peru**
- **Pedro Albuja, Trujillo, Peru**
- **Ruben Kowalyszyn, Rio Negro Province, Argentina**
- **Silvia Bonicatto, Buenos Aires Province, Argentina**

# Coordination Committee

- **Gina Torres Rego Monteiro**
- **Ines Echenique Mattos**
- **Lene Sadler Veiga**
- **Maria do Rosario Latorre**
- **Maria Paula Curado**
- **Rosalina Jorge Koifman**
- **Sergio Koifman**

# International Cooperation

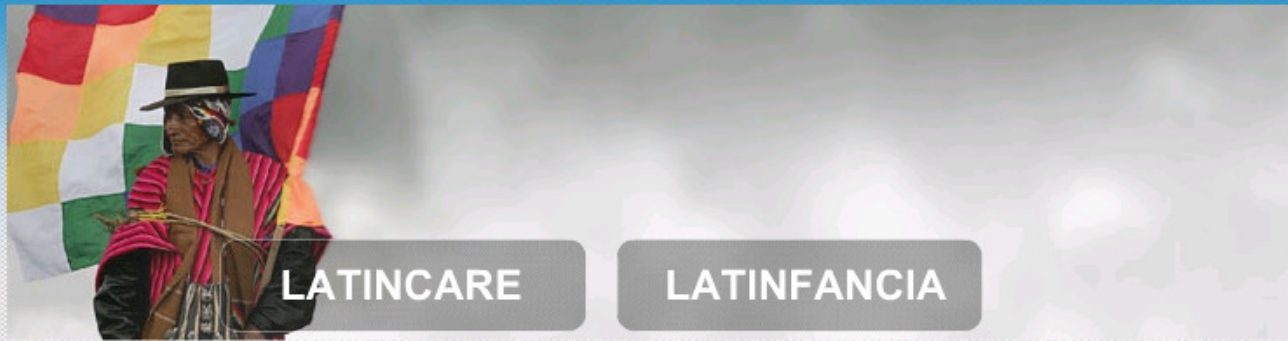
- Carmen Martinez (Granada, Spain)
- Gemma Gatta (Milan, Italy)
- Roberta de Angelis (Roma, Italy)

# Funding

- The LATINCARE Project has been supported by the Brazilian National Research Council (CNPq), grant number 490203/2005-1

Web site

[www.latin-care.com](http://www.latin-care.com)



**Technical support: Edesio Martins**